

SECURED BY DESIGN LICENCE HOLDER

THIS IS TO CERTIFY THAT

Supaglaze Ltd t/a Shepley Windows & Conservatories & Visage

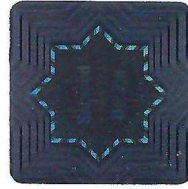
OF

**Shepley House, Outram Road, Globe Love Industrial Estate, Dukinfield, Greater Manchester,
SK16 4XE, UK**

HOLDS A SECURED BY DESIGN LICENCE
VALID IN CONJUNCTION WITH THE CURRENT SCHEDULE UNTIL

24th November 2025

PLEASE REFER TO [HTTPS://WWW.SECUREDBYDESIGN.COM/MEMBER-COMPANIES/SBD-MEMBERS](https://www.securedbydesign.com/member-companies/sbd-members)
FOR THE CURRENT SCHEDULE INFORMATION



G. Ferguson

GUY FERGUSON
CEO, POLICE CRIME PREVENTION INITIATIVES LIMITED

DATE

25th November 2024

Secured by Design



Official Police Security Initiative



CMS MARK®

CMS 3357WDG

This is to certify that the Factory Production Control System of:

Supaglaze Ltd t/a Shepley Windows & Conservatories
Shepley House
Outram Road
Dukinfield
Cheshire
SK16 4XE

has been approved and granted the CENSolutions CMS Mark in respect of their compliance to:

Rehau Total 70 PVC-U Window and Door System

Projecting Windows, Fixed Windows and Multilight Windows
(with or without fixed lights) - (Visage)

Single and Double Doors Standard & Low Threshold (Open in/Out) - (Visage)
Composite Doors - (Visage)

Rehau Rio Flush Sash Windows (Visage)

Windows and Doors made from PVC-U extruded hollow profiles

BS 7412:2007, BS 8529:2017, EN 14351-1:2006 + A2:2016, BS 6375-1:2015 & PAS 24:2022

For and on behalf of CENSolutions Ltd

Joint Managing Director

Licence first granted: 24 May 2021

Re-issued: 13 August 2024



This certificate remains the property of CENSolutions Ltd and may be withdrawn at any time following failure to achieve the appropriate standard required by the CENSolutions Ltd auditing system.

Current status of Licensees can be determined by written application to CENSolutions Ltd.



CENSOLUTIONS®

CENSolutions Ltd

Woodland Lodge

Log Cabin 20

Dunston Business Village

Dunston

Stafford

ST18 9AB

tel: +44 (0)1785 716625

email: info@censolutions.com

www.censolutions.com

company reg.no: 4931820



CMS MARK®

CMS 3357WDS

This is to certify that the Factory Production Control System of:

Supaglaze Ltd t/a Shepley Windows & Conservatories
Shepley House
Outram Road
Dukinfield
Cheshire
SK16 4XE

has been approved and granted the CENSolutions CMS Mark in respect of their compliance to:

Rehau Total 70 PVC-U Window and Door System

Projecting Windows, Fixed Windows and Multilight Windows
(with or without fixed lights) - (Visage)

Single and Double Doors Standard & Low Threshold (Open in/Out) - (Visage)
Composite Doors - (Visage)

Rehau Rio Flush Sash Windows (Visage)

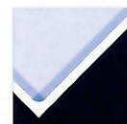
Weather performance of windows and doors for domestic applications
BS 7412:2007, BS 8529:2017, BS EN 14351-1:2006 + A2:2016 / BS 6375-1:2015

For and on behalf of CENSolutions Ltd

Joint Managing Director

Licence first granted: 24 May 2021

Re-issued: 13 August 2024



CENSOLUTIONS®

CENSolutions Ltd
Woodland Lodge
Log Cabin 20
Dunston Business Village
Dunston
Stafford
ST18 9AB
tel: +44 (0)1785 716625
email: info@censolutions.com
www.censolutions.com
company reg.no: 4931820



This certificate remains the property of CENSolutions Ltd and may be withdrawn at any time following failure to achieve the appropriate standard required by the CENSolutions Ltd auditing system.

Current status of Licensees can be determined by written application to CENSolutions Ltd.



CMS MARK®

CMS 3357WDB

This is to certify that the Factory Production Control System of:

Supaglaze Ltd t/a Shepley Windows & Conservatories
Shepley House
Outram Road
Dukinfield
Cheshire
SK16 4XE

has been approved and granted the CENSolutions CMS Mark in respect of their compliance to:

Rehau Total 70 PVC-U Window and Door System

Projecting Windows, Fixed Windows and Multilight Windows
(with or without fixed lights) - (Visage)

Single and Double Doors Standard & Low Threshold (Open in/Out) - (Visage)
Composite Doors - (Visage)

Rehau Rio Flush Sash Windows (Visage)

Windows and External Pedestrian Door Sets

BS 7412:2007, BS 8529:2017 & BS EN 14351-1:2006 + A2:2016
Factory Production Control

For and on behalf of CENSolutions Ltd

Joint Managing Director

Licence first granted: 24 May 2021

Re-issued: 13 August 2024



CENSOLUTIONS®

CENSolutions Ltd

Woodland Lodge
Log Cabin 20
Dunston Business Village
Dunston
Stafford
ST18 9AB

tel: +44 (0)1785 716625

email: info@censolutions.com

www.censolutions.com

company reg.no: 4931820



This certificate remains the property of CENSolutions Ltd and may be withdrawn at any time following failure to achieve the appropriate standard required by the CENSolutions Ltd auditing system.

Current status of Licensees can be determined by written application to CENSolutions Ltd.